



Using Filters in Photoshop

- [Top Ranked Instagram Filters](#)
- [Video: Introduction to Filters](#)
- <https://helpx.adobe.com/photoshop/how-to/filter-effects.html>

You can use filters to clean up or retouch your photos, apply special art effects that give your image the appearance of a sketch or impressionistic painting, or create unique transformations using distortions and lighting effects.

Paint and Retouch Tools

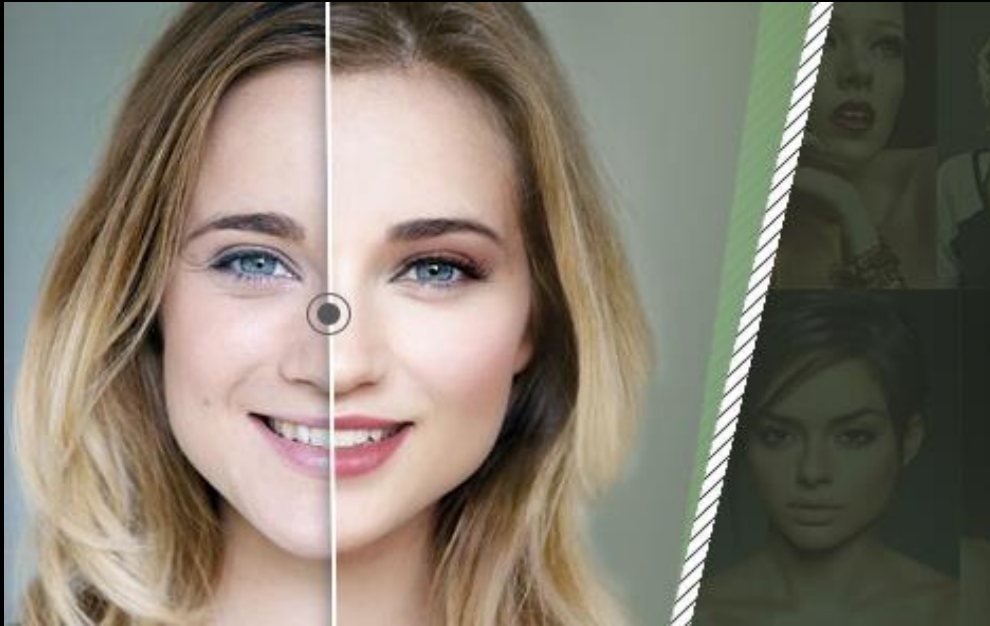



Retouch Tools



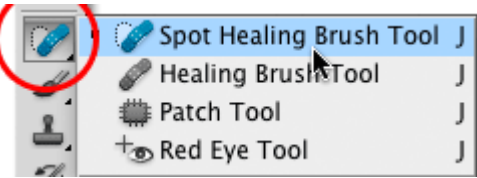
- ⇐ Spot Healing Brush
- ⇐ Healing Brush
- ⇐ Patch

- ⇐ Clone Stamp



- 
- Retouch tools are destructive editing tools. If you are going to be working on these tools **DO NOT WORK ON THE ORIGINAL LAYER; duplicate the layer** so you can toss them if something goes work.
 - **Insert new layers** for all your changes. You can insert as many as you like. This will give you more control to delete any of the changes without having to undo.

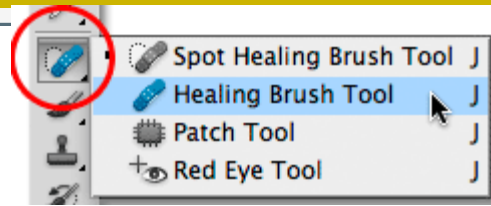
Spot Healing tool



- Spot Healing Brush Tool – used to **quickly remove blemishes** and other imperfections in your photos. It automatically **samples from around** the retouched area.



Healing Brush Tool



- Healing Brush Tool – is similar to the Spot Healing Brush, but you must first **select a source** before using the brush.



Patch Tool



- Patch tool – **replaces larger areas** than the spot healing brush (such as a large scar or scratch).



NOTE: YOU SHOULD ALWAYS DUPLICATE YOUR ORIGINAL AND ADD A NEW LAYER/S FOR EACH CHANGE.

Clone Stamp Tool



- Clone Stamp – used to **copy/clone one part of an image onto another** area of the picture.
- It allows you to set a **sampling point** and use it as a reference to create a new cloned area
- When you select the Clone Stamp tool, check the settings in the options bar. Make sure you have a brush size appropriate for the job.

Before

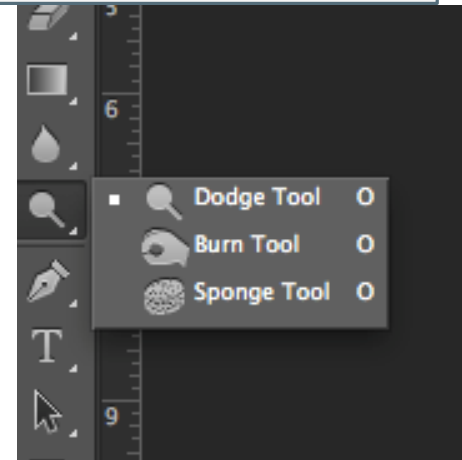


After



Dodge and Burn Tools

Photographers hold back light to lighten an area on the print (dodging) or increase the exposure to darken areas on a print (burning). The more you paint over an area with the Dodge or Burn tool, the lighter or darker it becomes.



- **Burn tool – darkens areas of an image**
- **Dodge tool – lightens areas of an image**

Liquify Tool

- The **Liquify filter** lets you **push, pull, rotate, reflect, pucker, and bloat** any area of an image. The distortions you create can be subtle or drastic, which makes the Liquify command a powerful tool for retouching images as well as creating artistic effects.



Smart Object

What does it mean to convert to smart object?

- **Smart Objects** are layers that contain image data from raster/bitmap or vector images.
- You can perform nondestructive transforms. You can scale, rotate, skew, distort, perspective transform, or warp a layer without losing original image data or quality because the transforms don't affect the original data.